

# CARNIVAL GLASS AUCTION

Mr. & Mrs. Gil Schmidlin, and Mr. & Mrs. Marshall Shafer, Owners

MAY 26, 1973 . . . . . TOLEDO, OHIO



WOODY AUCTION COMPANY  
COMPLETE AUCTION SERVICE



# CARNIVAL GLASS AUCTION

Saturday, May 26, 1973

10:00 A.M.

## HOSPITALITY MOTOR INN

1800 Miami Street

TOLEDO, OHIO

This auction consists of some of the finest carnival glass to be found anywhere. It is not an extremely large offering – approximately 350 pieces – but it is without doubt one of the best auctions ever held when rarity and beauty are the basis for comparison.

Mr. and Mrs. Gil Schmidlin have collected for years and their collection has always been widely admired. Choice pieces from it are included in this auction.

Mr. and Mrs. Marshall Shafer are known to collectors across the country as experts on carnival glass. They were fortunate in being able to acquire the fabulous Harry Whitlow collection of carnival glass last year. Some of the top pieces from this collection are offered to you in this auction.

We could go on and on about the rarity of the items offered; the quality of the glass; and the outstanding color and iridescence of every piece, but we feel this is unnecessary.

“One picture is worth a thousand words.” This is as true with carnival glass as anything. There is no way words can describe the beauty of the choice carnival glass which is presented in this brochure, and every piece of which sells to the highest bidder May 26. This is a fantastic opportunity to add to your collection.

There is a registration fee of \$4.00 for the luncheon, seat and buying number.

The glass may be viewed from 6 to 9 p.m. Friday evening.

Sales Manager:

**JOHN M. WOODY**

Rt. 1, Box 76 Derby, Kansas 67037

Phone: (316) 746-2694

Auctioneer:

**TERRY L. LOGSDON**

Rt. 1, Brinkhaven, Ohio

Phone: (216) 276-2264

for further information, contact either of the above

## ELK'S COLLECTION

—Only Known Complete Collection of  
ELK's Pieces. Pictured on Cover

- Elk's Nappy - p. (only one known)
- Elk's Paperweight - p.
- Elk's Bell, Parkersburg, 1914 - b.
- Elk's Bell, Atlantic City, 1911 - b.
- Elk's Plate, Parkersburg, 1914 - b.
- Elk's Plate, Atlantic City, 1911 - b.
- Elk's Ruffled Bowl, Detroit, 1910 - g.
- Elk's Ruffled Bowl, Detroit, 1910 - b.
- Elk's Bowl, Detroit, 1910 - b.
- Elk's Bowl, Detroit, 1910 - amy.
- Elk's Bowl, "Two-Eyed," Detroit, 1910-amy.

## RED

- 10" Vintage Bowl, gorgeous
- 7½" Acorn Bowl
- 8" Ftd. Peacock & Grape Bowl
- Open Edge Basket
- Holly Carnival Hat

## AUSTRALIAN

- Large Swan Bowl - p.
- Small Swan Bowl - p.
- Large Magpie Bowl - m.
- Small Magpie Bowl - p.
- Small Kookabura Bowl - m.



## RARITIES

N Town Pump - p.  
 Daisy Cut Bell - m.  
 Seacoast Pin Tray - g.  
 Buzz Saw Cruet w/stopper - g.  
 Millersburg Courthouse Bowl - amyt.  
 Cornucopia candleholders, pair - w.  
 Zippered Loop Lamp - smoky  
 Hobnail Swirl Ladies Cuspidor - amyt.  
 Millersburg Dolphin Compote w/"Rosalind"  
 interior - amyt.

Orange Tree Loving Cup - m.  
 Inverted Strawberry Creamer, marked  
 "Nearcut" - m.  
 Corn Vases - w., i.g.  
 Kittens Dish, 6 flutes - b.  
 Kittens Dish, 4 sides turned up - m.  
 Kittens Toothpick Holder - m.  
 Tadpole Vase - p.  
 Signed Nautilus - peach opal.



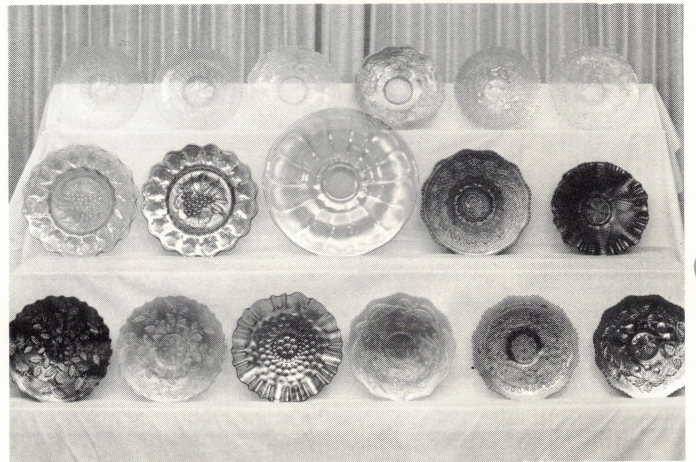


## N GRAPE & CABLE

Banquet Punch Bowl & Base - p.  
 Banquet Punch Bowl & Base - m.  
 Candlelamp - g.  
 Punch Bowl, 6 cups - p.  
 Sweetmeat Compote, whimsy - p.  
 Sweetmeat, Covered - p.  
 Perfume - p.  
 2 Colognes - p.  
 Powder Jar - p.  
 Dresser Tray - p.  
 Pin Tray - p.  
 7 pc. Water Set - p.  
 Cracker Jar - p.  
 Banana Bowl - p., m.  
 Orange Bowl - b., m.  
 Hatpin Holder - p., m., g.  
 Hatpin Holder - white w/yellow top,  
 only one known  
 Candleholder - smoky  
 Bowl with spatula feet - b., m.  
 Shot glass - m. (damaged)  
 11" Ice Cream Bowl - p.  
 Ftd. Plate - p.  
 Shallow Bowl - p.; g.  
 Plate - p.  
 Plate, one side up - g.  
 Plate, 2 sides up - g.  
 Hair Pin Holder - m.  
 Punch Bowl Base, regular - p.

## PLATES

11½" Garden Path - p. (the most spectacular  
 piece of carnival glass we have ever seen)  
 Soldiers & Sailors - b. (very rare)  
 Poppy Show - ice blue; ice green  
 Large Stag & Holly - m. (very rare)  
 Persian Medallion Chop Plate - b.  
 N Peacocks on Fence - w., b., i.g.  
 Good Luck - amyt.  
 Hearts & Flowers - p.  
 Round-up - peach opal.  
 Posy & Pods - g.  
 Three Fruits - aqua opal., b., m.  
 Horse Medallions - m.  
 Heavy Grape Chop Plates - g., m.  
 Comet - b.  
 Coin Dot - p.  
 N. Strawberry - p., m.  
 Holly Carnival - b., m.  
 Cosmos - b.  
 Rosiland - g.  
 Scroll Embossed - p.  
 Peacock at Urn - w.  
 Windflower - m.  
 Appleblossom Twig - b.  
 Captive Rose - b.  
 Peacock & Grape, ftd. - g.  
 Daisy & Pinwheel - g.  
 Orange Tree - w., m.  
 Pansy - p.  
 Fanciful - b.  
 14¾" Wide Panel - m.  
 N Strawberry, one side up - p.  
 Fishscales, small - m.  
 Persian Garden, small - m.  
 Cherry Circle, small - b.  
 Three Fruits Plate-pastel



## ADVERTISING PIECES

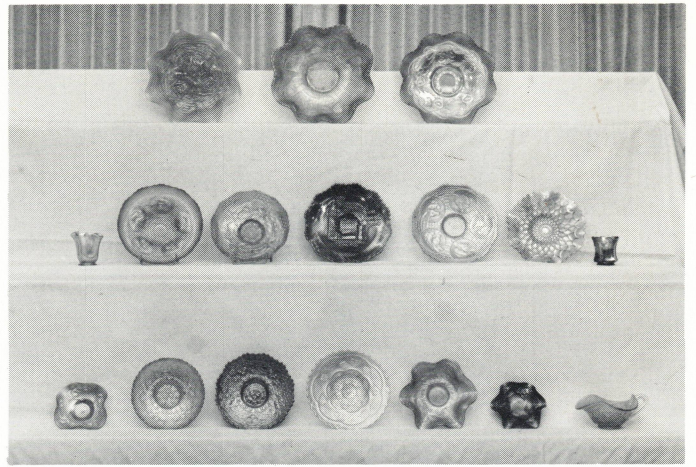
Spector's Department Store Plate - m.  
"Horlacher" Millersburg Thistle Bowl - g.  
"Old Rose Distillery Co." 9" G & C Plate - g.  
N "Fern Brand Chocolates," side up - p.

## WATER SETS

N Greek Key - m.  
Butterfly & Plume - amyt.  
N Dandelion - p.  
Imp. Grape - m.

## WATER PITCHERS

N Peacock at Fountain - w.  
Flute - p., clambroth  
N Singing Bird - p.  
Grape Arbor - p.  
Floral & Grape - b.  
Lacy Dewdrop - pearl (only one known)  
Lustre Rose - m.  
Lustre & Clear - m.



## ROSEBOWLS

Horse Medallions - m.  
Wreath of Roses - p.  
Daisy & Plume - p.  
Fine Cut & Roses - p.  
Louisa - orchid  
N Leaf & Beads, etched "Souvenir  
of Milwaukee, Wisc., 1909"  
Fenton's Flowers, flared - g.



## MUGS

Orange Tree - b., m.  
Vintage - m.  
N Singing Birds - amyt., m.  
Beaded Shell - p.  
Fisherman - p.  
Stork & Rushes - m.  
Wide Panel - m.

## BASKETS, BON BONS & COMPOTES

7 N Baskets - aqua, aqua blue, i.g., w., p., b., m.  
N Flared Basket - w.  
N Butterfly Bon-Bon - p.  
Puzzle Bon-Bon - p.  
Holly Sprig Bon-Bon - g.  
Wreath of Roses Bon-Bon - g.  
Three Fruits Pedestal Bon-Bon - aqua  
Miniature Blackberry Compote - b., p.  
Hearts & Flowers Compote - aqua  
Imperial Grape Compote p.  
Leaf Ray Compote - peach  
Rose Panels Compote - m.

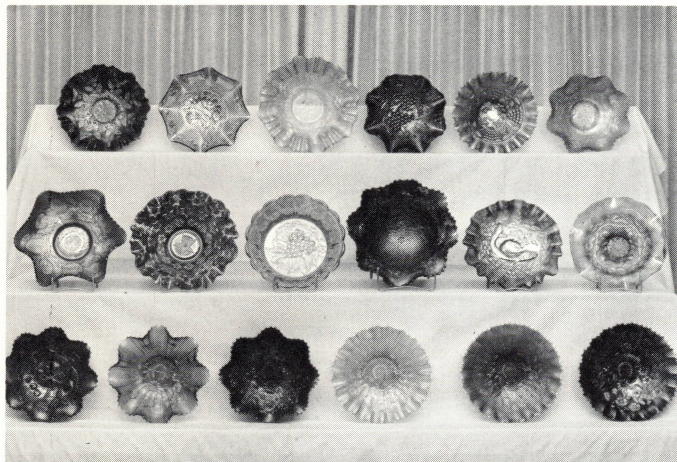


## MILLERSBURG BOWLS

- an outstanding group  
Cherries/Hobnail Exterior - amyt. (very rare  
w/Hobnail Exterior)  
Trout & Fly - amyt.  
Many Stars - amyt.  
Fleur de Lis - amyt.  
Peacock at Urn - amyt.  
Blackberry Wreath - amyt.  
Whirling Leaves - amyt.  
Little Flowers - amyt.  
Cosmos - m.  
Vintage - g.

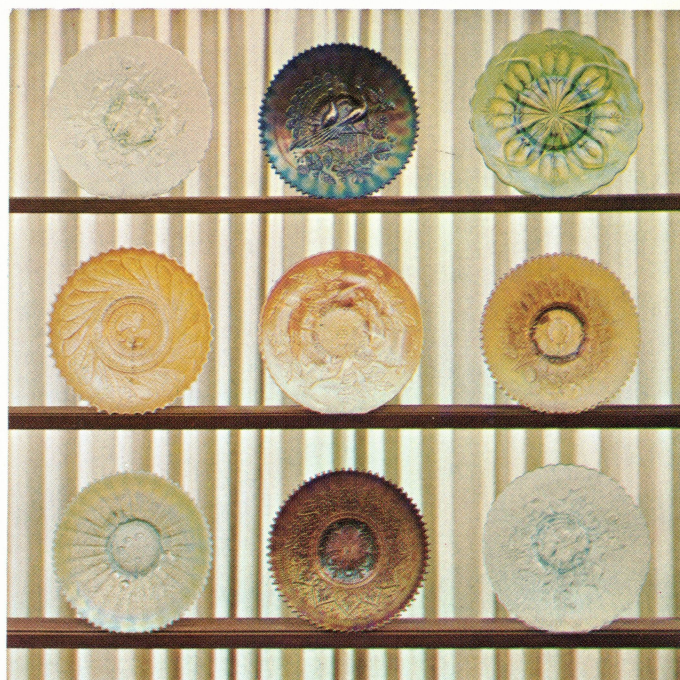


Pony Bowl, gold horse - amyt.  
 Peacock at Fount. Orange Bowl - p.  
 Fenton's Thistle Banana Bowl-p.,m.  
 Basketweave - i.b.  
 Ten Mums, ribbon edge, rarity-amyt.  
 Wishbone, Ftd. - amyt.  
 Three Fruits, Ftd. - p.  
 Butterfly & Tulip-m



## TUMBLERS

Floral & Grape - b., amyt.  
 Stork & Rushes - b., amyt.  
 God & Home - b.  
 Oriental Poppy - p.  
 Leaf Tier, ftd. - m.  
 Grape Arbor - p.  
 Peacock at Fountain - p.  
 Butterfly & Berry - b.  
 Rambler Rose - m.  
 Grapevine Lattice - m.  
 Concave Diamond - ice blue



## BOWLS

Dragon & Strawberry - m.  
 Hearts & Horseshoe - m.  
 Rose Show - aqua opal; w.  
 N Peacock/Urn Ice Cream - w.  
 Little Fishes - m.  
 Little Fishes, Ftd. - amyt.  
 Good Luck-Elect. Blue, P.,G.,B.,M.  
 Rose Show Variet - b.  
 Mums & Greek Key - i.b.  
 N Peacock on Fence - aqua  
 Scale Band & Rays - w.  
 Nippon - i.g.  
 Hearts & Flowers - w.  
 Carolina Dogwood - ice blue opal.  
 Heavy Grape - m.  
 Blackberry Wreath - g.  
 Cherry Circles, small - m.  
 Inverted Strawberry Sauce (nearcut)-m.  
 Lion Bowl - m.  
 Horse Medallion, Ftd. - m.  
 Fine Cut & Roses Ftd. - aqua  
 N Drapery - i.b.  
 Three Fruits - p.  
 Holly - b.  
 Cherry Chain Variet - m.  
 Pansy - helios  
 Imp. Grape - p.  
 Circle Scroll - m.  
 Large Ski Star - p.  
 Large Stag & Holly - b., m.  
 Pony - amyt., m.



## VASES

- Daisy & Drape - m.
- Decorated Fan - m.
- Large Ripple - amyt.
- N Tall Paneled - m.
- Rib, tall, thin - b.
- N Fluted - g.
- Large Tree Trunk - p., m.
- Tall Rustic - g.
- Small Carnival Milk Glass - M. Opal
- Tree of Life Car Vases - m.

## MISCELLANEOUS

- Imperial Grape Water Carafe - p.
- Flute Toothpick - g.
- Buttermilk Goblet - m.
- Swan Master Salt - i.g.
- Fashion Punch Bowl - m.
- N Peacock at Fount. Spooner - p.
- Pr. Painted Shades - m.
- 474 Punch Set - m.
- Poinsetta milk pitcher - g.
- Pair Candleholders - olive gn.
- Captain's Bottle - b.
- Diamond Lace Berry Set - m.
- Beaded Shell Berry Set - m.
- Fentonia Berry Set - m.
- N Raspberry milk pitcher - p.
- 5 Octagon Goblets - m.
- Pansy Relish - g., p., amber, m.
- Imperial Grape Punch Bowl Base - p.
- Memphis Punch Bowl Base - p.

g-green; p-purple; b-blue; m-marigold; amyt.-amethyst; opal.-opalescent;  
i.g.-ice green; i.b.-ice blue; w-white







**WOODY AUCTION COMPANY**  
COMPLETE AUCTION SERVICE

Sales Manager

**JOHN M. WOODY**

Rt. 1, Box 76 Derby, Kansas 67037

Phone: (316) 746-2694

Auctioneer

**TERRY L. LOGSDON**

Rt. 1, Brinkhaven, Ohio

Phone: (216) 276-2264

