

**A.C.C.G.C.**

**Bernice Thach**

**4500 N. Ridge Road**

**Wichita, Kansas 67205**



# A.C.C.G.C.

**Air Capital Carnival Glass Club**

March 2003

New Series

on Lettered Pieces



**Lee Markley**

**Box 306**

**Mentone, Indiana 46539**

46539+0306 04



# Air Capital Carnival Glass Club

**President \*\*\*\*\*Don Kime**

1 5201 E. 47th Street  
Derby, Kansas 67037  
(316) 733-8424

**Vice President \*\*\*\*\*Jerry Kudlac**

1425 Apache N.E.  
Piedmont, Oklahoma 73078  
(405) 373-4455 E-mail jckok@ionet.net

**Secretary \*\*\*\*\*Randy Thach**

4500 N. Ridge Road  
Wichita, Kansas 67205  
(316) 722-5837 E-mail ACCGC@cox.net

**Treasurer \*\*\*\*\*Keith Schmoker**

1955 S. Cooper  
Wichita, Kansas 67207  
(316) 682-6663

**Historian \*\*\*\*\*Alan Fullrich**

2440 W. St. Louis  
Wichita, Kansas 67203  
(316) 945-8289 E-mail alanreva@att.net

**Newsletter Editor \*\*\*\*\*Bernice Thach**

4500 N.Ridge Road  
Wichita, Kansas 67205  
(316) 722-5837 E-mail aggb@cox.net

**Photographs by Jerry Kudlac & Bernice Thach**

**Some Photographs copied with permission from the**

**San Diego Carnival Glass Club & the Southern California Carnival Glass Club.**

**Send new and renewal memberships, address changes also if interested in educational videos or seminar videos contact Randy Thach.**

**Contact Don Kime for information on our convention.**

**Send articles for newsletter to Bernice Thach.**

## **Seminar & Educational Videos**

Listed below are the videos we have available for you to purchase.

All of these are from our past conventions.

1. Carl Schrader - Carnival Glass Why
2. John Britt - Fenton Glass
3. Karen Engle - Kaleidoscope of Kolor
4. Don Lacock - Punch Bowl Sets
5. Diane Fry - Patterns
6. Frank Fenton - The Way it Was (1908 - 1912)
7. Richard Cinclair, John Britt & Frank Fenton - Fenton Glass
8. Richard Cinclair - Red, White and Blue
9. Marie McGee - Millersburg Glass
10. Richard Cinclair - Grape & Cable
11. Chuck Kremer - King & Queen Table Sets
12. Richard Cinclair - Northwood
13. Ardon Bucher - Dynamic Duo (Dragon & Lotus)
14. Roy Hieger - Imperial
15. Marie Capps - Ice Blue
16. Harold Cox - Peacocks
17. Jim Seeck - Odd Shapes
18. Tom Mordini - Colors
19. Jerry & Carol Curtis - If Opportunity Knocks
20. John Muehlbauer - Fowl
21. Gale Eichhorst - Unusual & Favorite Things
22. Dick & Jennie Hostetler - Genetically Engineered Peacocks
23. Carl & Eunice Booker - Potpourri
24. Keith & Nola Schmoker - Why We Collect Carnival Glass
25. Will & Judy Schutz - Then Came Carnival Glass
26. Jerry & Cleo Kudlac - The Windflower Pattern
27. Dorothy Morgan - If Momma Only Knew
28. Reg Dunham - Peacock at the Fountain

If you are interested in becoming a member, renewal, or if you are wanting to order a video, please fill out the form below and

Mail your payment to  
Randy Thach  
4500 N. Ridge Road  
Wichita, Kansas 67205

NAME \_\_\_\_\_

ADDRESS \_\_\_\_\_

\_\_\_\_\_

\_\_\_\_\_

TELEPHONE \_\_\_\_\_

E-MAIL ADDRESS \_\_\_\_\_

\_\_\_\_\_ Check if new member  
Enclosed is my check for \$15.00

\_\_\_\_\_ Check if membership renewal.  
\$15.00 per household

\_\_\_\_\_ I want to order a video.  
Enclosed is my check for \$20.00 each.

Name of the Video \_\_\_\_\_

More Videos \_\_\_\_\_

More Videos \_\_\_\_\_

# From the Editor

April 6<sup>th</sup>, 2003 Air Capital Meeting will be in the home of Don Kime. Meeting time 2:00 p.m. Please bring your Ladies items. (Dresser Trays – Pin Trays – Hat Pin Holders – Hat Pins – Perfumes - Etc.) & any pieces that you would like Jerry to photograph for the Air Capital Library.

Ran out of room in this newsletter – just not enough pages for all the great articles coming in! Thanks you Air Capital Members. Do you know of any articles you would like to see? Let me know! Bernice

Welcome New Members

Don O'Rouke

3309 W. Toledo – Broken Arrow, OK.

(918) 294-8826 - [Dono54@aol.com](mailto:Dono54@aol.com)

Hollis & Lucy Worthen

420 N.E. 6<sup>th</sup>

Abilene, KS. 67410 - (785) 263-3265

Congratulations to Anna Bell Vaughn

Who is now Anna Bell Rasmussen

1510 St. Andrews Drive Apt 127

Lawrence, KS 66047

New Address – Kathy & Molly Evans

408 North Tyler Avenue Pierre, SD

(605) 224-4367 - [carnivalmom@hotmail.com](mailto:carnivalmom@hotmail.com)

New E-mail – Dean & Diane Fry

[dfry@rnetinc.net](mailto:dfry@rnetinc.net)

Thanks to all the renewals. We need the renewals as well as new members to keep our club growing. There is some spectacular Carnival glass for sale at auction this year. Check out the ads at the back of this brochure. Remmen Auction Service already has the pictures of Pacific Northwest convention in August listed on their web site & the www Convention Mickey Reichel auction has some super glass. Air Capital Convention will be October 16<sup>th</sup> – 19<sup>th</sup>, with Mickey Reichel having another great auction.

## Jerry & Cleo Kudlac

### On After Glow

"After Glow" is the marigold iridescent treatment of pink and occasionally green glass. It was first listed as a product of the Diamond Glass-Ware Company in the 1928 China and Glass Directory. Later in 1929, it was advertised in the G. Sommers and Company catalog as an assortment of pink "After Glow". In 1930, as assortment of pink and green "After Glow" Carnival Glass was advertised in the same catalog. Even though about a dozen glass patterns are shown in the advertisement, very few are known to exist in the "After Glow" line.

Pink "After Glow" is also difficult to recognize since it usually has a heavy overlay of marigold iridescence. The green color can usually be seen by looking at the base of the glass with a white back light. In both cases the pattern must be one made by the Dugan/Diamond Glass Company.

---



### Beaded Basket - Lime Green

The Beaded Basket is found in both pink "After Glow" and a lime green color. Author Carl O. Burns, considers both to be examples of the "After Glow" line of Carnival Glass manufactured by the Diamond Glass Company. This basket is lime green color with a marigold overlay. Note the handles have a greenish marigold appearance. Since this basket has a very heavy overlay of marigold iridescence, it is difficult to see the lime green color except on the base where it is not iridized. This basket was advertised in a local auction as marigold.

# Program on Pumpkin Marigold

By Jim & Kelani Lee



# Waffle Block Tumbler By Imperial



The Waffle Block pattern itself is quite common in a variety of pieces EXCEPT the tumblers and water pitchers. The tumblers are very rare and seldom come up for sale. Don Moore, in his book, "The Shape of Things" shows a clambroth

tumbler and states that it might be "one of a kind." There are only the two colors known for the tumblers, marigold and clambroth. Just this past November, a pitcher and one tumbler sold at a Mickey Reichel auction. The tumbler brought \$315 and the pitcher \$90. They were very light in color. That same day, thanks to a very kind person, I was able to purchase a very dark and beautiful tumbler from a private collection.

The pattern was made by the Imperial Glass Company. There are two sizes in the tumblers. The standard tumbler rests on a collar base. The variant lacks the collar base, resting on a ground base.

Looking through the price guides from 1983 - 2002, I found the following tumblers being sold.

(1982) Clamboth \$170.

(1983) Clamboth \$150.

(1984 -85) Clamboth \$250.

(1986) Marigold \$200 - Clamboth \$60 - \$110 - \$200.

(1992) Clamboth \$155 - \$215.

(1983) Marigold \$70 - \$150 - \$155.

(1997) Clamboth \$160.

(1999) Clamboth \$275.

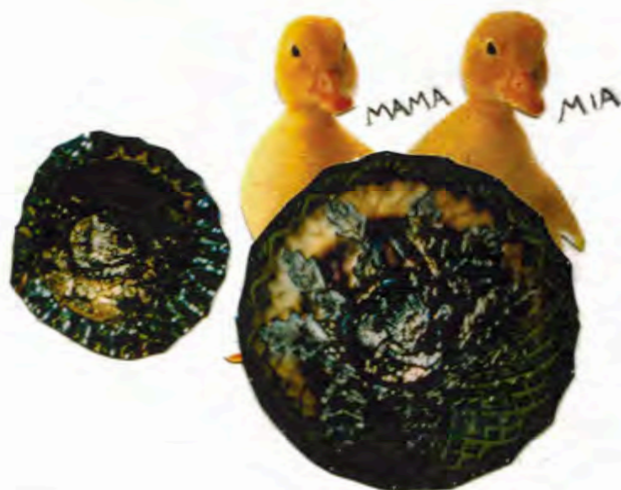
& (2002) Clamboth \$315.

Regardless if you call them light marigold, clambroth or true marigold, the tumblers are rare and well worth purchasing when you find one.

*Don Kime*



# Nesting Swan



Shown are two variations of a classic Millersburg Pattern, an ice cream shape green satin show stopper of all time and a candy ribbon edge diamond shaped radium block buster. Ice Cream shape feathers out the candy ribbon model by a few hundred sacks of corn. Signets appear through the courtesy of the Miami Zoo; let me inject it took quite a bit of honking and maize to seal this deal. Design is found in usual Millersburg colors plus blue, honey amber and Vaseline. One ultra rare rose bowl in marigold is reported; other shapes are ruffled, ICS, square, and CRE diamond shape. The Diamond and Fan is the exterior pattern. Prices vary depending on color, shape and condition of the swan. Rose bowl had an asking price of \$5,000 a few years back, ICS netted \$2,000 and the CRE \$1,600 in 1998. Now you know some heavy shucking was going down to win these birds. No matter how you crack it, still comes out corn with a hefty price tag.

*Carnivally Yours*  
*Fred Rudy*

# Advertising & Commemorative C



## Isaac Benesch

Maker Millersburg

The Great House of Isaac Benesch and Sons was the largest home furnishings department store of its time. Established in 1858. Pieces made bowl & bon bon with Holly Sprig pattern.

Color Amethyst  
\$300.00 to \$500.00 Bowl  
Owner Dick & Jennie  
Hostetler



## Brazier's Candies

Scarce – Maker Fenton

The National

Cofectioners Association took an educated guess that the Brazier company was from the Great Lakes region.

Pieces made flat plate, hand grip plate & bowl.

Color Amethyst  
Plates \$500.00 to \$700.00

Bowl sold in 1999  
for \$650.00.

Owner Jerry & Carol  
Curtis

In this series you will see lettered pieces valued from \$5  
\$15,000.00. Information gained on this series from The  
Of Carnival Glass lettered pieces by John D. Resnik & I  
Field Guide to Carnival Glass. Hope you enjoy the serie

# Carnival Glass Lettered Pieces

1<sup>st</sup> Article in a Series



## Garden Mums

Rare – Maker Fenton

Blank salesman's  
sample. Your  
advertising goes  
In the center.

Pieces made flat plate,  
hand grip plate &  
round bowl.

Color Amethyst

Bowl \$150.00 - \$300.00

5" Plate Flat \$400.00 - \$550.00

Handgrip Plate \$350.00 - \$500.00

Owner Eleanor Hamilton



## Geo. W. Getts Pianos

Grand Forks, N. Dak

Rare – Maker Fenton

Established in 1889.

In addition to pianos, the  
firm sold musical instruments,  
sheet music & other  
musical merchandise.

Located at 23 South Third Street  
Grand Forks, North Dakota.

Mr. Getts died in 1923 and the  
business was discontinued.

All know examples of this piece have  
the "S" in the word Forks  
reversed.

Color Amethyst

Pieces made bowl & 6" plate

Bowl \$700.00 - \$1100.00

Plate \$2100.00 - \$3,550.00

Selling in the Remmen Auction  
Pacific Northwest Convention

50.00 to

Encyclopedia

Dave Doty's –

es. Bernice

# Magic Glass

We are extremely fortunate to participate in the Carnival Glass extravaganza a viewing of all the major glass making. Walking down **Cobblestone** roads, many favorite patterns were exhibited such as **Singing Birds** in iridized colors, gorgeous **Peacocks** some were at the **Fountain** having a drink, while others at the **Urn** having a **Peacock Tail** gate party, then there were those sitting on the **Fence** people watching. On occasion **Kittens** would play hide and seek among **Chrysanthemums** at the **Old Homestead** on **Nu Art** circle. Time passed so swiftly, we decided to break for lunch at the **Persian Garden** diner to savor **Big Fish**, **Dragons Tongue**, **Star Fish** mold and **3 Fruits** salad. Millersburg collector ordered **Trout-Fly**, waiter informed him, they were fresh out of flies. Beverage-drink choices were **Ripple** smoothie, **Buzz Saw**, or **Tornado**, settled for iced green tea. Desserts consisted of **Greek Key** lime pie, stuffed **Grape Leaves** or chocolate **Swirl Seaweed**. Upon leaving, we gave the waiter a 3-1 **Holly** tip and cashier suggestion who was wearing a **Frolicking Bears** t-shirt that her **Knotted Beads** might get caught on her **Zipper Loop**. Crossing **Brooklyn Bridge** we waved to **Hattie** feeding **Pony** and **Nesting Swans**. Out of the blue **Elegance** appeared on her way to the **Pepper Plant** to meet her beau **Peter Rabbit**. After a few **Double Dolphins** on the rocks, they went to the dance floor and did the **Lucille**, shortly after, they departed in the **Misty Morn** in Pete's **Vintage** banana boat, the green radium **Rays-Ribbons**.

----- To be continued -----

*Carnivally Yours*

*Fred*

*Rudy*

# KARNIVAL KALEIDOSCOPE

New Article from Air Capital.

Guess what these pieces of carnival glass used to be!

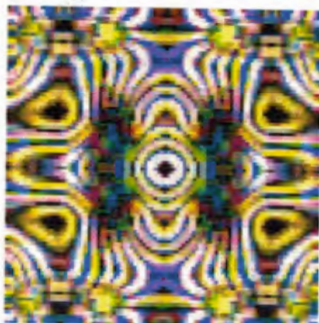
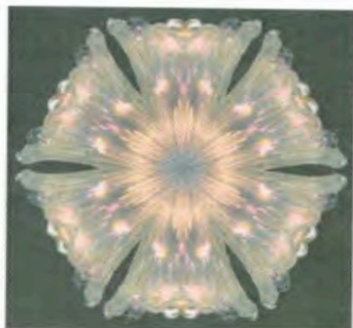
Before they have been run through the Air Capital Kaleidoscope.

Hint! These pieces were at the last Air Capital meeting at Dick & Diane Elders.

They belong to Randy & Bernice Thach

Ron & Judith Britt and Carol & Jerry Southworth.

Answers on the bottom of this page.



Kaleid 1. Poppy Pickle Dish - Thach  
Kaleid 2. Grape & Cable variant bowl- Britts  
Kaleid 3. Diamond Rib Vase - Southworths

# WINDMILL



## Milk Pitchers

Windmill was made by the Imperial Glass Company in bowls, collar based and footed, dresser trays, a pickle dish, tumblers, water and milk pitchers. The colors listed for the milk pitchers are marigold, purple, helios (green), smoke and clambroth. I have the four colors marigold, helios (and it glows), purple and smoke. The milk pitchers are 6" tall. Smoke and purple are scarce.



Mordini's price guides from 1988 – 2001, lists only two Clambroth milk pitchers have sold and one was listed as pastel marigold.

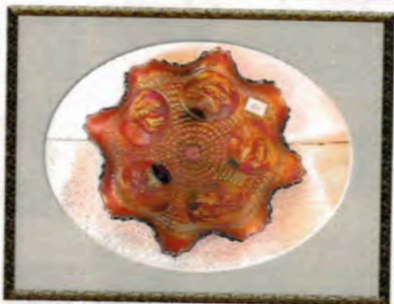
Do you have one for sale?

*Eleanor Hamilton*

# San Diego/Southern California Carnival Glass Convention - Preview

Betty Robertson (805) 482-3473

Jim Seeck Auction - Saturday, March 1st, 2003



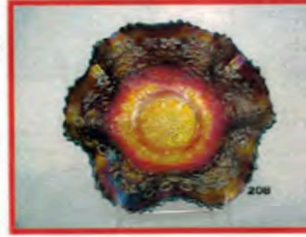
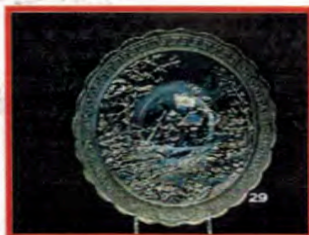
# Texas Convention Room Displays





# Jim Wroda Carnival Glass Auction

Saturday, March 8th, 2003 - (614) 237-6360



---

## Heart of America Carnival Glass Convention

Saturday, April 26th, 2003

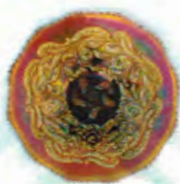
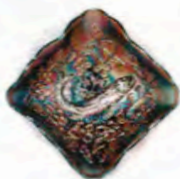


Barton Dooley Collection  
Embassy Suites, Kansas City, MO.  
Bob Grissom (816) 356-5320

# Tom Burns Carnival Glass Auction

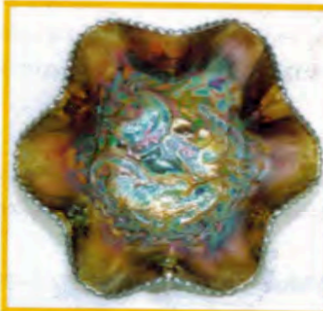
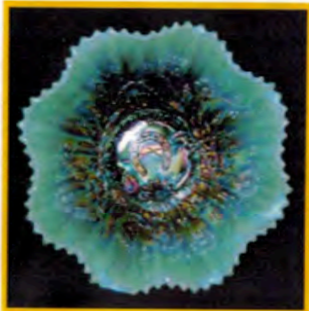
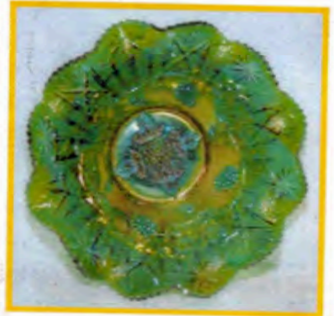
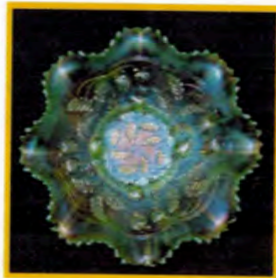
Brandt Collection - Last Weekend in March

Bill Richards (330) 757-2001 Tom Burns (607) 776-7942



Meet me in St. Louis - April 12th, 2003  
wwwcga - Early Bird Convention Preview

<http://www.woodland.com/convention/> Mickey Reichel Auction



# Carnival Glass Calendar

February 26 - March 2, 2003 San Diego/Southern California Carnival Glass Convention  
Country Suites by Ayers Ontario, California Jim Seeck Auction  
Contact Betty Robinson (805) 482-3473

March 8th, 2003 Jim Wroda Carnival Glass Auction  
Columbus Airport Hotel 750 Stelzer Road, Columbus, Ohio  
(614) 237-6360 [www.jimwrodauction.com](http://www.jimwrodauction.com)

March 15, 2003 Mickey Reichel Auction Service Boonville, Missouri  
(660) 882-5292 (660) 882-5283

E-mail [mreichel@undata.com](mailto:mreichel@undata.com) Web Page [www.yourauctionpage.com/reichel](http://www.yourauctionpage.com/reichel)

Last Weekend in March - Tom Burns Carnival Glass Auction  
Brandt Collection Strongville, Ohio  
Bill Richards (330) 755-2620 Fax (330) 757-4917 [brnzauctsv@aol.com](mailto:brnzauctsv@aol.com)

April 9th -12th, 2003 Meet Me in St. Louis  
WWW.CGA Convention 2002 Crowne Plaza Hotel, St. Louis  
(314) 291-6700 Mickey Reichel Auction [www.woodsland.com](http://www.woodsland.com)

April 23 - 27th, 2003 Heart of America Carnival Glass Convention  
7640 N.W. Tiffany Parkway Embassy Suites, Kansas City, Missouri  
(816) 891-7788 (800) 362-2779 Bob Grissom (816) 356-5320

**AUCTION**  
COMING UP... 

May 17th, 2003 - Jim Seeck Auction  
Seeck Auction Center 15564 300th St. Mason City, Iowa  
(641) 424-1116 [jimjan@seeckauction.com](mailto:jimjan@seeckauction.com)

May 24th, 2003 Mickey Reichel Auction Gallery Boonville, Missouri  
June 21st, 2003 - Mickey Reichel Auction Gallery Boonville, Missouri  
(660) 882-5292 (660) 882-5283

E-mail [mreichel@undata.com](mailto:mreichel@undata.com) Web Page [www.yourauctionpage.com/reichel](http://www.yourauctionpage.com/reichel)

August 9th, 2003 Pacific Northwest Carnival Glass Auction  
Best Western Greenwood Inn Beaverton, Oregon  
Dennis Swafford (503) 925-9301 [swafford@earthlink.net](mailto:swafford@earthlink.net)

October 16th - 19th, 2003 Air Capital Convention - Wichita Kansas  
Mickey Reichel Auction Don Kime (316) 733-8424